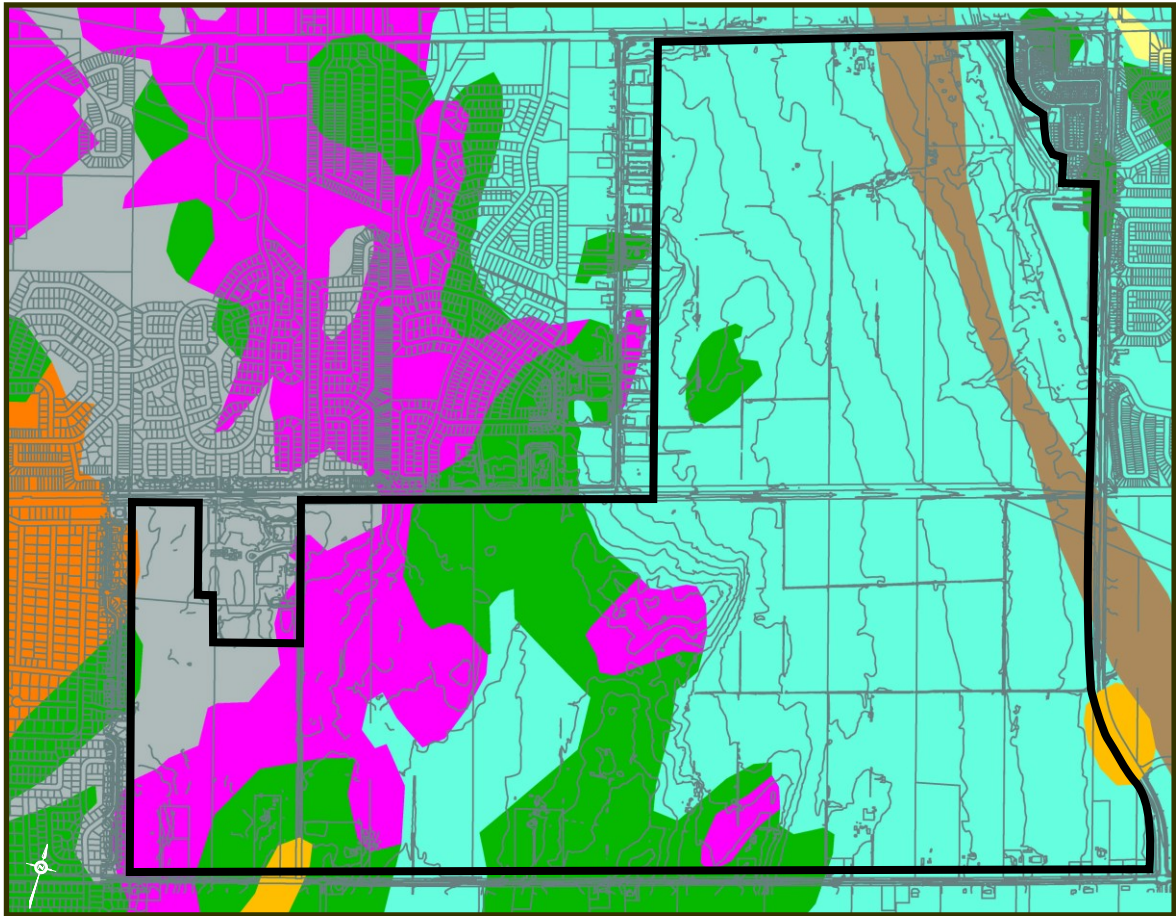

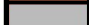








## Surficial Geology



### Legend

-  Thick Organic Deposits (such as Peat)
-  Thin Discontinuous Organic Deposits
-  Beach Formations Composed of Sand, and Sand and Gravel
-  Reworked Glaciofluvial Deposits of Fine to Medium Sand
-  Deposits of Sensitive Marine Silty Clay
-  Glaciofluvial Deposits of Sand and Gravel
-  Glacial Till
-  Paleozoic Bedrock (Near Surface)

