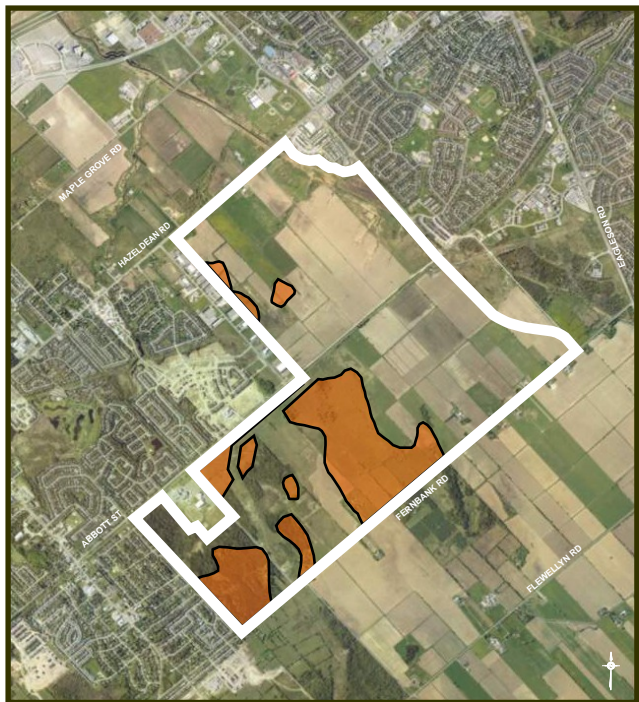


Archaeological Potential

Pre-Contact Potential

Areas with medium/high potential for pre-contact archaeological artifacts. Additional field work will be conducted in Spring 2007.



Historical Potential

Potential for historical archaeological sites. The red areas have high discovery potential, the orange areas have moderate potential, and the remainder has low historical discovery potential.

Buildings at 590 Hazeldean Road have high cultural heritage significance and are included on the City of Ottawa Heritage Reference List.

